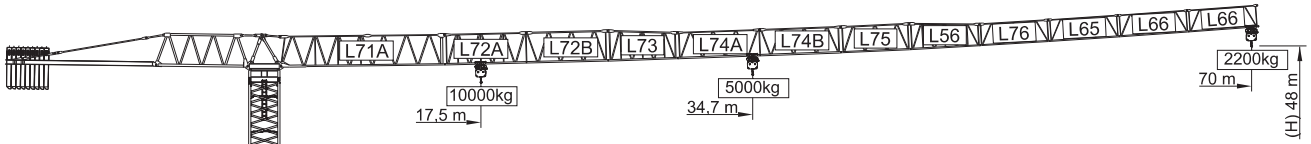
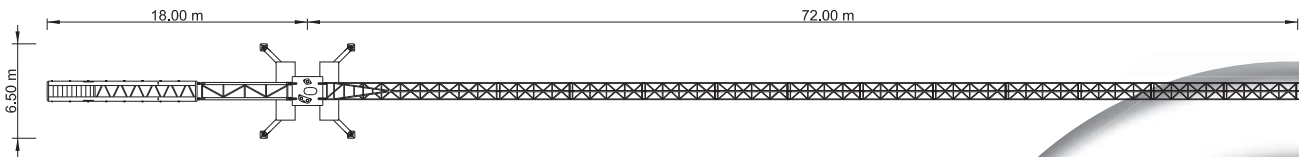
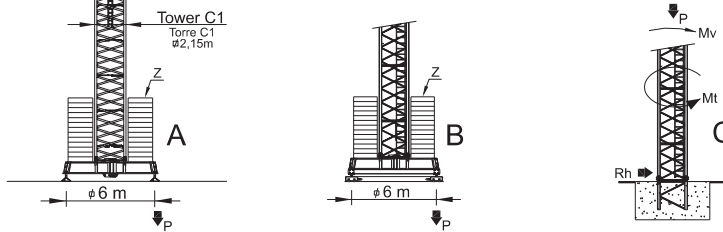


SGT 7022TL



LOADS CARGAS

Counterweight Contrapeso	Jib Length Comprimento da lança	Kg / m		m	18	21	26	31	36	38	43	48	50	55	60	65	70
		10000	5000														
18000kg 8x2000kg+2x1000kg	70 m L71A+L72A+L72B+L73+L74A+L74B+L75+L56+L76+L55+L56+L66	17,5 m	34,7 m	5000	5000	5000	5000	5000	4800	4500	3900	3500	3300	3000	2700	2400	2200
18000kg 8x2000kg+2x1000kg	65 m L71A+L72A+L72B+L73+L74A+L74B+L75+L56+L76+L55+L56	19,9 m	39,4 m	5000	5000	5000	5000	5000	5000	5000	4500	4000	3800	3400	3100	2800	1800
18000kg 8x2000kg+2x1000kg	60 m L71A+L72A+L72B+L73+L74A+L74B+L75+L56+L76+L55+L56	21,2 m	42 m	5000	5000	5000	5000	5000	5000	5000	4900	4300	4100	3700	3300	2900	
17000kg 8x2000kg+1x1000kg	55 m L71A+L72A+L72B+L73+L74A+L74B+L75+L56+L76	21 m	41,5 m	5000	5000	5000	5000	5000	5000	5000	4800	4300	4100	3700	3300		
16000kg 8x2000kg	50 m L71A+L72A+L72B+L73+L74A+L74B+L75+L56+L76	21,4 m	42,4 m	5000	5000	5000	5000	5000	5000	5000	4900	4400	4200				
15000kg 7x2000kg+1x1000kg	48 m L71A+L72A+L72B+L73+L75+L56+L76+L55	21,6 m	42,7 m	5000	5000	5000	5000	5000	5000	5000	5000	5000	4400				
13000kg 6x2000kg+1x1000kg	43 m L71A+L72A+L72B+L73+L75+L56+L76	20,6 m	40,8 m	5000	5000	5000	5000	5000	5000	5000	4600	4000					
11000kg 5x2000kg+1x1000kg	38 m L71A+L72A+L72B+L73+L75+L56	20 m	39,7 m	5000	5000	5000	5000	5000	5000	5000	5000	5000					
9000kg 4x2000kg+1x1000kg	36 m L71A+L73+L75+L56+L76+L65	19,8 m	39,3 m	5000	5000	5000	5000	5000	5000	5000	5000	5000					
8000kg 4x2000kg	31 m L71A+L73+L75+L56+L76	19,5 m	38,7 m	5000	5000	5000	5000	5000	5000	5000	5000	5000					
7000kg 3x2000kg+1x1000kg	26 m L71A+L73+L75+L56	19 m	37,6 m	5000	5000	5000	5000	5000	5000	5000	5000	5000					



REACTIONS REACÇÕES

BALLAST TABLE AND MAXIMUM REACTIONS FOR ALL JIB VERSIONS
TABELA DE LASTRO E REACÇÕES MÁXIMAS PARA TODAS AS VERSÕES DE LANÇA

H m	A / B		C			
	Z kN	P kN	Mv kNm	P kN	Rh kN	Mt kNm
21	500	531	2226	441	66	237
24	600	556	2281	450	74	237
27	600	566	2343	459	82	237
30	600	576	2409	468	90	237
33	600	587	2484	477	98	237
36	700	624	2565	486	106	237
39	700	637	2654	495	114	237
42	800	675	2747	504	122	237
45	800	689	2848	513	130	237
48	900	725	2927	522	136	237

CHARACTERISTICS CARACTERÍSTICAS

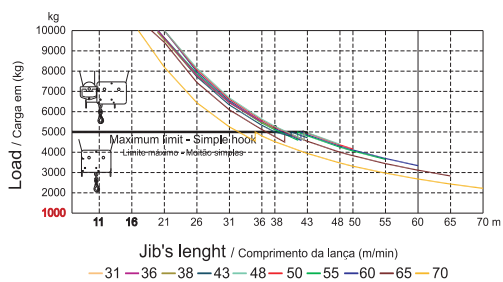
Motions Movimento		Speed Velocidade	Motor's power Pot. dos motores
↑↓ Hoisting Elevação	⬆️ ⬆️	0 a 100 m/min.	33 kW
		0 a 50 m/min.	
○ Slewing Orientação		0 a 1 r.p.m.	3x5 daN.m
↔️ Trolleying Distribuição		0 a 60 m/min.	5,5 kW
↔️ Travelling Translação	*	0 a 10 m/min.	2x4 kW
⚡ Electric power Tension / Tensão		/ Potência total 400 v ±5% (50 Hz)	55 kVA

* Option / Opção

PARTS ELEMENTOS

		A (mm)	B (mm)	C (mm)	Peso (kg)
Jib section Lana		11970	1900	2900	6750
Jib section Lana		6185	1160	2260	1400
Jib section Lana		6195	1160	2260	1140
Jib section Lana		5230	1160	2260	780
Jib section Lana		6165	1160	1950	830
Jib section Lana		6165	1160	1950	710
Jib section Lana		5200	1160	1950	560
Jib section Lana		5200	1160	1930	530
Jib section Lana		5180	1160	1610	400
Jib section Lana		5110	1160	1610	360
Jib section Lana		5110	1160	1610	280
Tower section 12m Tramo torre 12m		12000	2180	2180	4200
Tower section 6m Tramo torre 6m		6130	2180	2180	2200
Tower section 3m Tramo torre 3m		3195	2180	2180	1200
Telescopic section Tramo telescopagem		3195	2250	2250	1360
Head Section Cabeote		2620	2180	2150	8000
Pyramid Piramide		2430	1300	760	1270
Counter-jib 1 Contra-lana		6475	1220	2300	2600
Counter-jib 2 Contra-lana		10550	1500	500	4000
Cross shaped base Chassis		8725	800	1370	4600
Cross shaped base Chassis		4200	380	1370	1700
Ballast Contra-peso		1000	250	2530	1000
Foundation tower Tramo de encastrar		2280	2150	2150	850

LOAD DIAGRAM DIAGRAMA DE CARGAS



SPEED DIAGRAM DIAGRAMA DE VELOCIDADE

